

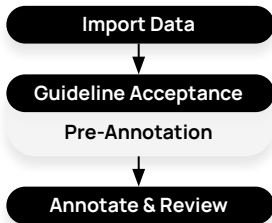
Kognic accelerates machine learning for performance-critical, Embodied AI such as automated and autonomous driving - ADAS/AD, robotics and industrial mobility.

As a trusted partner for global enterprises producing complex datasets, Kognic continuously improves its software - enabling smart automation - to become more efficient. How can we help reduce your total cost?



Pre-Annotation to the rescue

Pre-Annotation is the process of assigning preliminary labels to specific elements. The better your model is at finding objects - before core annotation tasks are underway - the less resources (and time) you need to get the job done.



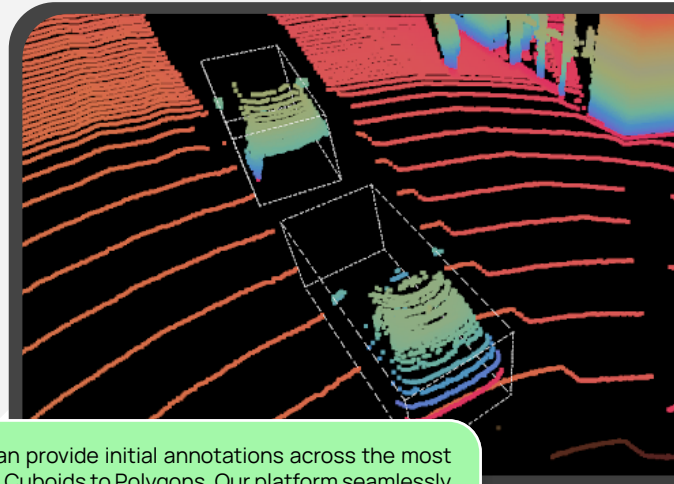
What can Pre-Annotation provide?

The value of pre-annotations is to apply labeling metadata upfront to allow for manual annotation to then focus on what matters. It is important to know where human feedback is best leveraged - not every shape needs human-in-the-loop. Pre-annotations can help create this balance.

Where does Pre-Annotation help?

In a recent effort, pre-annotation **reduced annotation time up to 62%** compared to annotating from scratch. The automation provided suggested positions for objects using dashed cuboids, enabling faster annotation without compromising accuracy.

You can then access all this through Kognic's **Co-Pilot** capability which is intergated into our award-winning developer experience. The variety of shapes that pre-annotations can be applied to have great potential for accelerating the correction process for simple 2D and even more complex 3D cuboids.



- point2d
- poly3d
- bbox
- cuboid

Getting started with pre-annotations is simple. You can provide initial annotations across the most common array of geometries - from Bounding Boxes to Cuboids to Polygons. Our platform seamlessly integrates and then utilizes pre-labels throughout your dataset workflows. And all this is accessible via our API bench - [check it out here](#).

```

    {
      "frame_properties": {
        "timestamp": 0,
        "external_id": "0",
        "streams": {"LIDAR1": {}, "ZFC": {}}
      },
      "objects": {
        "1232b4f4-e3ca-446a-91cb-d8d403703df7": {
          "object_data": {
            "bbox": [
              {
                "attributes": {
                  "text": [
                    { "name": "stream", "val": "ZFC" }
                  ]
                }
              }
            ]
          }
        }
      }
    }
  
```

Do you want to spend less on ground-truth?

Let's put Pre-Annotation to work.

trusted by

